



GET THE FUTURE YOU WANT

INTERNATIONAL ADMISSIONS GUIDE

VIRGINIA POLYTECHNIC INSTITUTE AND STATE UNIVERSITY

ABOUT VIRGINIA TECH

Virginia Tech is a comprehensive, four-year, public university with over 34,000 students, including 4,400 international students – more than any other university in Virginia. Students come from more than 110 countries around the world.

Founded in 1872, Virginia Tech pushes the boundaries of knowledge by taking a hands-on, transdisciplinary approach to preparing students to be leaders and problem-solvers.

The university has nine colleges and a graduate school:

- College of Agriculture and Life Sciences
- College of Architecture and Urban Studies
- Pamplin College of Business
- College of Engineering
- College of Liberal Arts and Human Sciences
- College of Natural Resources and Environment
- College of Science
- Virginia-Maryland College of Veterinary Medicine
- Virginia Tech Carilion School of Medicine and Fralin Biomedical Research Institute

A GLOBAL RESEARCH UNIVERSITY

Virginia Tech is ranked **46th** in university research in the United States with a research portfolio of more than **\$531 million**.

NATIONAL RANKINGS

No. 30 – BEST PUBLIC NATIONAL UNIVERSITIES
U.S. News & World Report

No. 76 – BEST NATIONAL UNIVERSITIES
U.S. News & World Report

No. 106 – U.S. College Rankings
Wall Street Journal/Times Higher Education



TOP 25 GLOBAL PROGRAMS

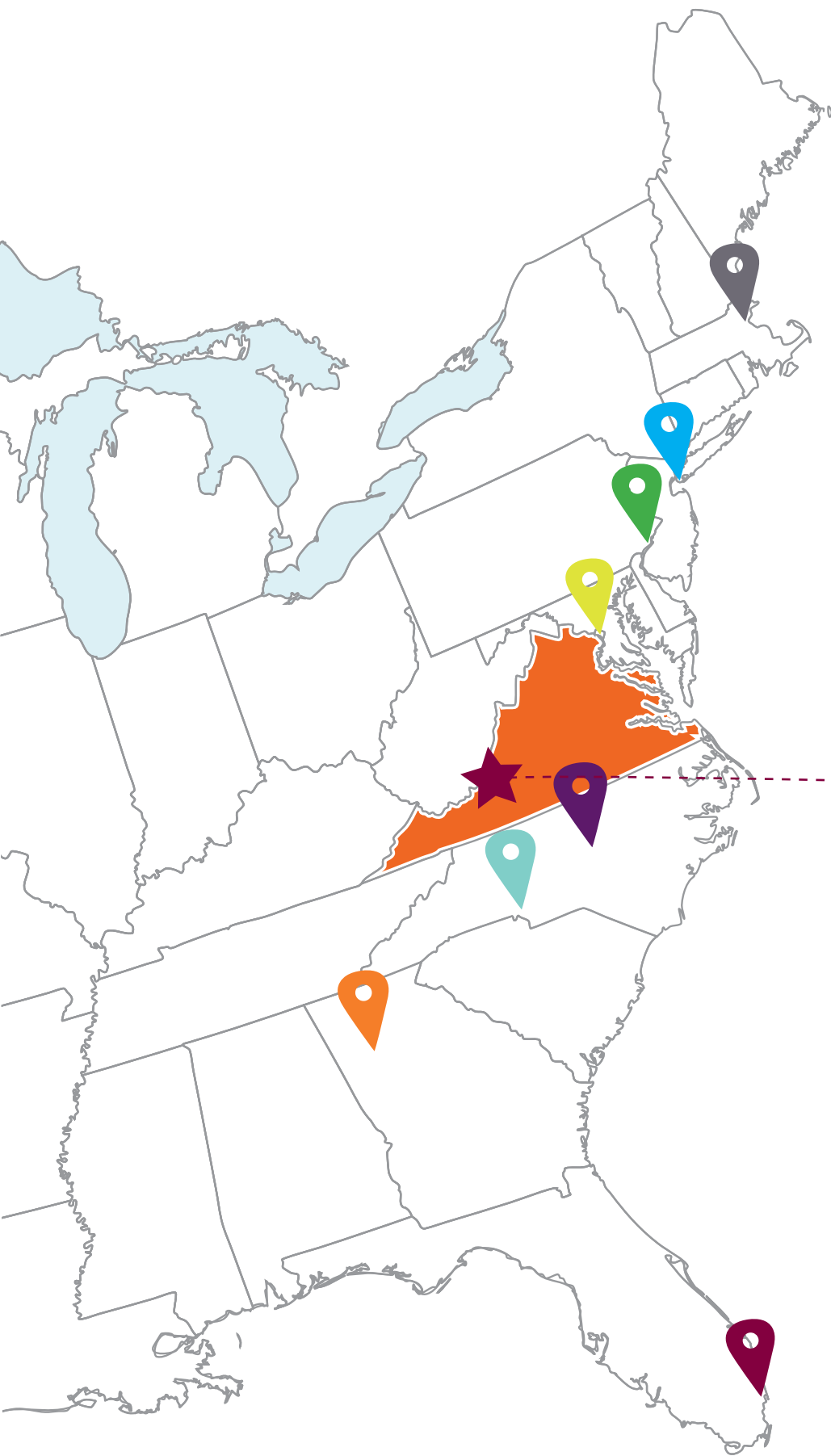
- ▶ AGRICULTURE & FORESTRY
- ▶ ARCHITECTURE
- ▶ CIVIL & STRUCTURAL ENGINEERING
- ▶ COMPUTER SCIENCE
- ▶ ELECTRICAL ENGINEERING
- ▶ ENGINEERING & TECHNOLOGY
- ▶ ENVIRONMENTAL STUDIES
- ▶ HOSPITALITY LEISURE MANAGEMENT
- ▶ MATERIAL SCIENCE
- ▶ MECHANICAL ENGINEERING
- ▶ MINING ENGINEERING
- ▶ STATISTICS & OPERATIONAL RESEARCH
- ▶ VETERINARY MEDICINE

– QS World University
Rankings, Times
Higher Education



WHERE IS VIRGINIA TECH?





LOCATED IN BLACKSBURG, VIRGINIA

Virginia Tech's main campus in Blacksburg includes over 210 buildings on 2,600 acres (1,052 hectares), an airport, top-rated athletic facilities, the Moss Arts Center, and an adjacent research park.

The unique pairing of a large research university and a small town creates a special experience. With abundant leisure activities, a reasonable cost of living, a moderate climate, and award-winning services, Blacksburg is known nationwide as a well-managed, forward-looking community.

The university is among the top 10 safest campuses in the country. The nationally accredited Virginia Tech Police Department operates 24 hours a day and provides full police service to the university community.

Public bus service is available across campus and around town.

Virginia Tech is a welcoming campus for students, faculty, and visitors from around the world. We take seriously the charge to create and nurture an open, inclusive environment. Through conversation and engagement with others, we can learn to value the identity and individuality of each person around us.

Our community has members from many different backgrounds and faith traditions. We offer a safe environment for students to practice or explore these faiths while promoting appreciation and respect for religious and spiritual diversity.

DISTANCE TO MAJOR CITIES

- Atlanta: 640 km. or 410 mi.
- Boston: 1,100 km. or 710 mi.
- Charlotte, N.C.: 270 km. or 173 mi.
- Miami: 1,450 km. or 901 mi.
- New York: 780 km. or 490 mi.
- Philadelphia: 660 km. or 426 mi.
- Raleigh, N.C.: 320 km. or 228 mi.
- Washington, D.C.: 420 km. or 269 mi.

HOUSING + DINING

LIVING-LEARNING COMMUNITIES

Living-learning communities provide students with the opportunity to thrive in and out of the classroom in an environment that becomes home. They connect your academic and co-curricular experiences to create a supportive, dynamic learning environment that becomes home.

Learn more at llc.vt.edu.

OFF-CAMPUS HOUSING

There are lots of housing opportunities off campus. Blacksburg has apartments, townhomes, rental homes, and homestay options available. Go to techoffcampus.com to view apartments and townhomes and find roommates.

CAMPUS DINING

Virginia Tech dining consistently ranks among the top in the country. It's so popular that many students who live off campus purchase dining plans. With 11 different dining centers around campus, plus a few food trucks, we have something for everyone.

DINING AWARDS & HONORS

- No. 3, Best Campus Food, "Best of 384 Colleges: 2019 Edition," *The Princeton Review*
- No. 2, Best Campus Food 2020, *Niche*
- Winner, 2019 Food Management Menu Madness Tournament, *Food Management*
- No. 1, Sales Volume College and University, *Freshens*
- No. 4, College Power Players, *Food Management*



UNDERGRADUATE DEADLINES

EARLY DECISION (BINDING):

Apply by November 1

EARLY ACTION:

Apply by December 1

REGULAR DECISION:

Apply by January 15

SUMMER/FALL TRANSFER:

Apply by March 1



TUITION + COST

UNDERGRADUATE

Per year

TUITION AND FEES: \$33,380

ROOM AND BOARD: \$9,460

OTHER EXPENSES: \$6,025

TOTAL: \$48,865

www.vt.edu/admissions/undergraduate/cost

GRADUATE

Per year

TUITION AND FEES: \$29,200

ROOM AND BOARD: \$10,200

OTHER EXPENSES: \$5,200

TOTAL: \$44,600

graduateschool.vt.edu/student-life/immigration-services/new-student-guide/financial-requirements

ADVANTAGE VT

Per semester

TUITION AND FEES: \$20,438

LIVING EXPENSES: \$6,700

HEALTH INSURANCE: \$1,260

TOTAL: \$28,398

lci.vt.edu/avtcost

In addition to the tuition and fees described above, various departmental, course, and lab fees may be assessed depending on the course(s) in which a student is enrolled. Living expenses are estimates only.

ADVANTAGE VT PATHWAY PROGRAM

EARN CREDIT WHILE IMPROVING YOUR ENGLISH AND ACADEMIC SKILLS

The AdvantageVT pathway program combines intensive academic skills training and university coursework. It is designed to jump-start your journey toward a bachelor's degree at Virginia Tech. For students who want to earn undergraduate credit while improving their English, we offer three start dates and rolling admission, with most decisions in 3-5 business days.

Application Deadlines

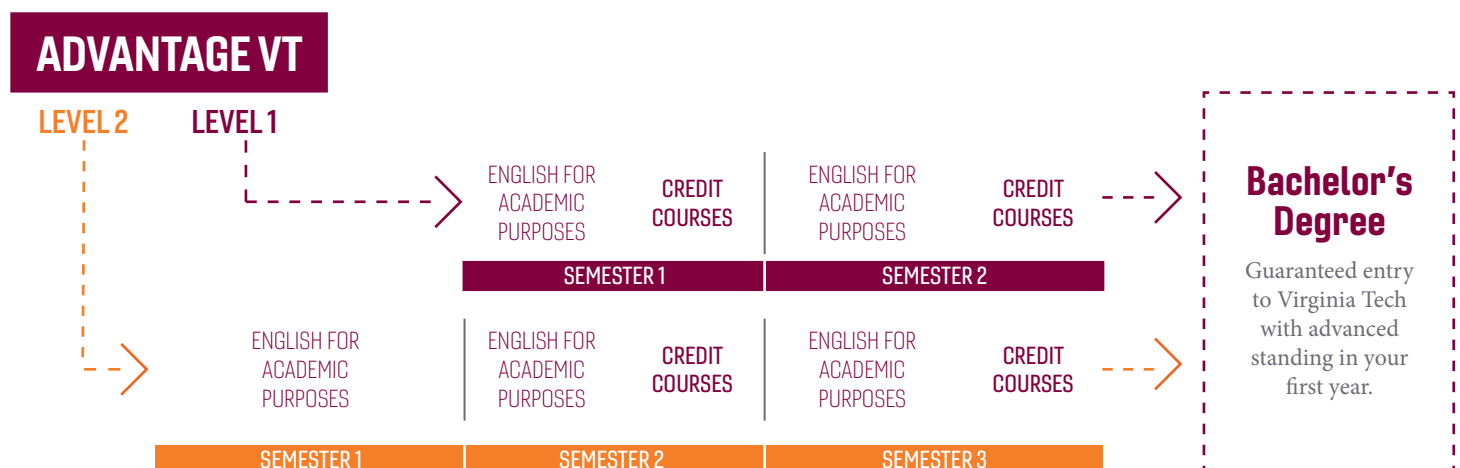
Fall semester: **July 10**

Spring semester: **November 15**

Summer semester: **March 15**

PROGRAM FEATURES

- **15-18 transferable credits** that count toward completion of your degree program.
- Intensive academic preparation.
- Integration into American university culture.
- Three tracks: **Business, Engineering, and Science.**
- Two levels, based on your English proficiency.
- Three entry dates per year – spring, fall, and summer.
- Guaranteed entry to Virginia Tech with no exit TOEFL required.



LEVEL 1

This two-semester program offers a balance of for-credit courses and English for Academic Purposes classes. It is for students with advanced English proficiency.

- TOEFL iBT 74
- IELTS 6.0 (with no subsection less than 6.0)
- PTE 50

LEVEL 2

Our three-semester program is for students who want a complete university preparation experience, with a special focus on intensive English language skills.

- TOEFL iBT 60
- IELTS 5.5 (with no subsection less than 5.5)
- PTE 44

INTENSIVE ACADEMIC PREPARATION

- Emphasis on content and vocabulary development in the areas of science, engineering, and business.
- A guided research project in your discipline of study and genre-specific writing (reports, memos, official correspondence, etc.).
- Independent research projects and oral presentations (topics from your disciplines).
- Support throughout the program, through seminars in academic, leadership, and social skills. Additional workshops focused on study skills, time management, test preparation, and other subjects will help prepare you for the demands of undergraduate study in the U.S.

BUSINESS PATHWAY

MAJORS

Accounting and Information Systems
Business Information Technology
Finance, Insurance and Business Law
Hospitality and Tourism Management
Marketing

ENGINEERING PATHWAY

MAJORS

Aerospace Engineering
Biological Systems Engineering
Chemical Engineering
Civil Engineering
Computer Engineering
Computer Science
Construction Engineering and Management
Electrical Engineering
Engineering Science and Mechanics
Industrial and Systems Engineering
Materials Science and Engineering
Mechanical Engineering
Mining Engineering
Ocean Engineering

SCIENCE PATHWAY

MAJORS

Biochemistry
Biological Sciences
Chemistry
Clinical Neuroscience
Cognitive and Behavioral Neuroscience
Computational and Systems Neuroscience
Computational Modeling and Data Analytics
Economics
Experimental Neuroscience
Geosciences
Mathematics
Microbiology
Nanoscience
Neuroscience
Physics
Psychology
Statistics
Systems Biology



**NO SAT,
NO TOEFL REQUIRED!**

APPLY TODAY: [LCI.VT.EDU/APPLY](https://lci.vt.edu/apply)

MORE INFO: [LCI.VT.EDU/ADVANTAGEVT](https://lci.vt.edu/advantagevt)

OTHER PATHS TO VIRGINIA TECH

If you want to improve your language skills in a university setting:

INTENSIVE ENGLISH PROGRAM

lci.vt.edu/iep

There is no better way to improve your English language skills and experience American culture than through the Language and Culture Institute's Intensive English Program. Whether you want to prepare for university study in the U.S. or simply enhance your language skills for work or pleasure, the LCI will help you reach your goals.

INTENSIVE ENGLISH PROGRAM:

- Full-time, noncredit academic program
- Six start dates, in the fall, spring, and summer
- 10 levels of instruction, from beginning to advanced
- Advanced computer-assisted learning center
- TOEFL iBT preparation classes offered each term
- All faculty have master's degrees or doctorates and certificates of advanced study

Intensive English Program		
Term	Start	End
Fall I 2019	August 26	October 18
Fall II 2019	October 21	December 20
Spring I 2020	January 13	March 6
Spring II 2020	March 16	May 15
Summer I 2020	May 25	July 3
Summer II 2020	July 6	August 14

* Dates are subject to change.

If you have lower English skills but wish to enter Virginia Tech as an undergraduate:

CONDITIONAL ADMISSION

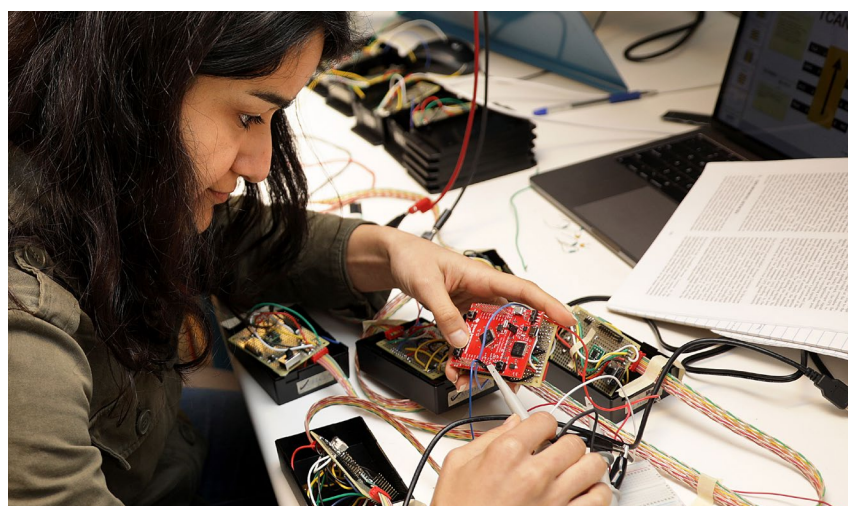
lci.vt.edu/cap

For prospective undergraduate students who meet all university admission requirements except language test score requirements. Open to all programs of study except design majors. Applicants are conditionally admitted based upon an evaluation of their high school records.

Participants work toward meeting admission requirements while studying at the Language and Culture Institute. When conditional requirements are met, you will be transferred into the undergraduate program.

ELIGIBILITY:

- The most competitive applicants present a high school equivalent grade-point average of at least 3.5 on a 4.0 scale (88%) for engineering majors and at least 3.0 on a 4.0 scale (75%) for other majors.
- Transfer students from U.S. or foreign universities or from U.S.-based English programs are ineligible.
- You must be 17 years old or older at the time you begin intensive English studies.



If you meet the minimum requirements for English proficiency, you are eligible to apply directly to the undergraduate program:

DIRECT UNDERGRADUATE ADMISSION
admissions.vt.edu

There are several deadlines from which to choose when submitting your application.

	Deadline	All materials due
Early Decision	Nov. 1	Nov. 15
Early Action	Dec. 1	Jan. 15
Regular Decision	Jan. 15	Feb. 1
Transfer	March 1	March 15

To have your IELTS/TOEFL/PTE score automatically sent to Virginia Tech, please specify Virginia Tech’s CEEB code (5859) on the test form.

ENGLISH LANGUAGE REQUIREMENTS

International students whose native language is not English must document proficiency in the English language by submitting either an IELTS, TOEFL, or PTE score.

- IELTS: At least 6.5, with no subscore below 6.5
- TOEFL: At least 80, with no section subscore below 16
- PTE: At least 53

OTHER REQUIREMENTS

As for the SAT, please note that for international students we are a test-optional university. In addition, we have an optional interview opportunity through InitialView.

ADVANCED PLACEMENT, INTERNATIONAL BACCALAUREATE, CAMBRIDGE EXAM, CLEP, AND DUAL ENROLLMENT

We award AP, IB, CLEP, and Cambridge Exam equivalencies after faculty review of content and applicable Virginia Tech credit.
*registrar.vt.edu/
registration-multi-brief/
ap-ib-clep-credit.html*

If you already have a baccalaureate degree and required TOEFL or IELTS scores:

GRADUATE ADMISSION
graduateschool.vt.edu

We encourage applicants to submit their complete online applications, including supplemental materials, early to allow sufficient time for applications processing. International applicants must submit their applications no later than April 1 for fall semester or September 1 for spring semester.

GRE (Graduate Record Examination) or GMAT (Graduate Management Admission Test) requirements vary by department.

TOEFL scores are required of all international students whose first language is not English, except those applicants who have graduated from an accredited university where English is the language of instruction. The Graduate School expects a minimum TOEFL score of 90 (IBT) for admission. Further, TOEFL scores of 20 or greater in Listening, Writing, Speaking, and Reading subsections are required. Some departments may require higher minimum scores.

IELTS is accepted. A 6.5 minimum is required to apply.

Official test scores should be sent to the Virginia Tech Graduate School, institution code 5859.

English language test scores are not required of U.S. permanent residents and U.S. naturalized citizens.

HOW TO APPLY FOR DIRECT UNDERGRADUATE ADMISSION:

Students applying as undergraduates to Virginia Tech should complete the application at coalitionforcollegeaccess.org. Students may start building a free profile at any time, and may use the information in this profile to start their application.

More about international applications is available at vt.edu/admissions/international.

UNDERGRADUATE MAJORS

ACCOUNTING AND INFORMATION SYSTEMS

Accounting; Accounting Information Systems Audit; Information Systems

AGRIBUSINESS

Agribusiness Management; Veterinary Business Management

AGRICULTURAL SCIENCES

AGRICULTURAL TECHNOLOGY ②

(2-YEAR PROGRAM;
APPLY AT WWW.AGTECH.VT.EDU)

Applied Agricultural Management; Landscape & Turf Management

ANIMAL AND POULTRY SCIENCES

Pre-Vet; Production/Business; Science

APPLIED ECONOMIC MANAGEMENT

Community Economic Development; Environmental Economics, Management, & Policy; International Trade & Development

ARCHITECTURE (5-YEAR PROGRAM) ① ③ ④

ART

Art History

ART (FINE ARTS)

Creative Technologies ⑤; Graphic/Visual Communication Design ⑤; Studio Art ⑤

BIOCHEMISTRY (AGRICULTURE)

BIOCHEMISTRY (SCIENCE)

BIOLOGICAL SCIENCES

Biomedical; Ecology, Evolution, and Behavior; Educational

BUILDING CONSTRUCTION

BUSINESS INFORMATION TECHNOLOGY

Computer-Based Decision Support Systems; Operations & Supply Chain Management

CHEMISTRY

CHILDHOOD PRE-EDUCATION

CINEMA

CLASSICAL STUDIES

COMMUNICATION SCIENCE AND SOCIAL INQUIRY

COMPUTATIONAL MODELING & DATA ANALYTICS

Biological Sciences; Economics; Physics

CONSUMER STUDIES

CREATIVE WRITING

CRIMINOLOGY

CROP AND SOIL SCIENCES

Agronomy; Crop Genetics & Breeding; International Agriculture; Turfgrass Management

DAIRY SCIENCE

Dairy Business Management; Dual Emphasis; Science/Pre-Vet

ECONOMICS (SCIENCES)

Business

ENGLISH

Literature; Pre-Education; Pre-Law

ENVIRONMENTAL CONSERVATION AND SOCIETY

Environmental Education and Outreach;

Leadership and Sustainability;

Recreation and Tourism Management

ENVIRONMENTAL HORTICULTURE

ENVIRONMENTAL INFORMATICS

ENVIRONMENTAL POLICY AND PLANNING

ENVIRONMENTAL RESOURCES MANAGEMENT

ENVIRONMENTAL SCIENCE

FAMILY AND CONSUMER SCIENCES

FASHION MERCHANDISING & DESIGN

FINANCE

FISH CONSERVATION

Freshwater Fisheries Conservation; Marine Fisheries Conservation

FOOD SCIENCE AND TECHNOLOGY

Food & Beverage Fermentation; Food Business; Food & Health; Science

FORESTRY

Forest Operations & Business; Forest Resource Management; Urban Forestry

FRENCH

GENERAL ENGINEERING ③ ⑥ (REQUIRED FOR ALL FIRST-YEAR ENGINEERING STUDENTS)

Aerospace Engineering ⑥; Biological Systems Engineering ⑥; Biomedical Engineering ⑥; Chemical Engineering ⑥;
Civil & Environmental Engineering ⑥; Computer Engineering ⑥; Computer Science ⑥;
Construction Engineering & Management ⑥;
Electrical Engineering ⑥; Industrial & Systems Engineering ⑥; Materials Science & Engineering ⑥; Mechanical Engineering ⑥;
Mining Engineering ⑥; Ocean Engineering ⑥

GEOGRAPHY

GEOSCIENCES

Earth Science Education; Geochemistry; Geology; Physics

GERMAN

HISTORY

HOSPITALITY AND TOURISM MANAGEMENT

HUMAN DEVELOPMENT

HUMAN NUTRITION, FOODS AND EXERCISE

Dietetics; Science of Food, Nutrition, & Exercise

HUMANITIES FOR PUBLIC SERVICE

INDUSTRIAL DESIGN ① ③ ④

INTERIOR DESIGN^{3,4}

INTERNATIONAL PUBLIC POLICY

INTERNATIONAL RELATIONS

INTERNATIONAL STUDIES

LANDSCAPE ARCHITECTURE (5-YEAR PROGRAM) ③ ④

LANDSCAPE HORTICULTURE AND DESIGN

MANAGEMENT

Entrepreneurship, Innovation, & Technology; Management Consulting & Analysis; Human Resource Management

MARKETING MANAGEMENT

Digital Marketing Strategy; Professional Sales

MATHEMATICS

Applied Computational Mathematics; Applied Discrete Mathematics; Mathematics Education

MEDICINAL CHEMISTRY

METEOROLOGY

MICROBIOLOGY

MULTIMEDIA JOURNALISM

MUSIC (AUDITION REQUIRED)

Creative Technologies in Music; Music Composition; Music Education; Music Technology; Music Performance

NANOMEDICINE

NANOSCIENCE

NATIONAL SECURITY AND FOREIGN AFFAIRS

NEUROSCIENCE ⑦

Clinical Neuroscience ⑦; Experimental Neuroscience ⑦; Cognitive and Behavioral Neuroscience ⑦; Computational and Systems Neuroscience ⑦

PACKAGING SYSTEMS & DESIGN

PHILOSOPHY

Pre-Medical Professions

PHILOSOPHY, POLITICS, AND ECONOMICS

PHYSICS

Physics Education; Pre-Health; Pre-Law

POLITICAL SCIENCE

Legal Studies; National Security Studies; Political Theory

POLYMER CHEMISTRY

PROFESSIONAL & TECHNICAL WRITING

PROPERTY MANAGEMENT

PSYCHOLOGY

PUBLIC HEALTH

PUBLIC RELATIONS

REAL ESTATE

RELIGION & CULTURE

RESIDENTIAL ENVIRONMENTS & DESIGN

RUSSIAN

SMART AND SUSTAINABLE CITIES

Environmental Affairs; Global Development; Public & Nonprofit Management; Public Policy; Urbanization: Planning & Policy

SOCIOLOGY

Africana Studies; American Indian Studies; Social Inequality; Research Methods; Women's & Gender Studies

SPANISH

SPORTS MEDIA AND ANALYTICS

STATISTICS

SUSTAINABLE BIOMATERIALS

Forest Products Business; Sustainable Biomaterials Science; Sustainable Residential Structures; Creating Sustainable Society

SYSTEMS BIOLOGY

THEATRE ARTS

Design; General Theatre; Performance

WATER: RESOURCES, POLICY, & MANAGEMENT

WILDLIFE CONSERVATION

UNDECIDED / EXPLORATORY

BUSINESS (UNDECIDED) ①

EXPLORE SCIENCE

(UNDECIDED) ①

EXPLORE TECHNOLOGY (UNDECIDED) ①

EXPLORING ARCHITECTURE AND URBAN STUDIES (UNDECIDED) ①

EXPLORING LIFE SCIENCES (UNDECIDED) ①

LIBERAL ARTS AND HUMAN SCIENCES, UNDECIDED ①

EXPLORING NATURAL RESOURCES (UNDECIDED) ①

UNIVERSITY STUDIES (UNDECIDED) ①



Advising programs: Students interested in pre-professional preparation in areas such as medicine, dentistry, education, physical therapy, pharmacy, veterinary studies, and law, may choose any major in any college, and may arrange to work with the appropriate pre-professional advisor to prepare for application and admission to the professional school of their choice.

- ❶ Applications accepted from incoming freshmen only; transfers may not choose these options.
- ❷ A maximum of 28 credits from the Agricultural Technology program can be applied toward a four-year degree in the College of Agriculture and Life Sciences.
- ❸ Restricted major - one for which demand far exceeds available space.
- ❹ Students are admitted in the fall semester only.
- ❺ Portfolio review required for entry at end of freshman year.
- ❻ All first-year students are admitted to General Engineering. Specific disciplines begin at the second year.
- ❼ All first-year students are admitted to Neuroscience. Specific disciplines begin at the second year.

GRADUATE DEGREES + PROGRAMS

	LOCATION	MASTER'S	DOCTORATE	COMBINED		LOCATION	MASTER'S	DOCTORATE	COMBINED
Aerospace Engineering	B	•	•		Environmental Sciences and Engineering	B,W	•		
Agricultural and Applied Economics	B	•	•		Fisheries and Wildlife Sciences	B	•	•	
Agriculture, Leadership, and Community Education	B	•	•		Food Science and Technology	B	•	•	
Alliance for Social, Political, Ethical, and Cultural Thought	B		•		Foreign Languages, Cultures, and Literatures	B	•		
Animal and Poultry Sciences	B	•	•		Forest Products	B	•	•	
Architecture	B,W	•			Forestry	B	•	•	
Architecture and Design Research	B,W		•		Genetics, Bioinformatics, and Computational Biology	B		•	
Bio-Inspired Buildings	B		•		Geography	B	•	•	
Biochemistry	B	•	•		Geosciences	B	•	•	
Biological Sciences	B	•	•		Geospatial and Environmental Analysis	B		•	
Biological Systems Engineering	B	•	•		Government and International Affairs	B,W	•		
Biological Transport	B		•		History	B	•		
Biomedical Engineering	B	•	•	•	Horticulture	B	•	•	
Biomedical Technology Development and Management	W	•			Human Centered Design	B		•	
Biomedical and Veterinary Sciences	B	•	•		Human Development	B,W	•	•	
Building Construction Science and Management	B	•			Human Nutrition, Foods, and Exercise	B	•	•	
Business, Accounting and Information Systems	B	•	•		Individual Interdisciplinary Ph.D.	B		•	
Business Administration	W	•			Industrial Systems Engineering	B,W	•	•	
Business, Executive Business Research	W		•		Interfaces of Global Change	B		•	
Business, Information Technology	B		•		Landscape Architecture	B,W	•	•	
Business, Finance	B	•	•		Macromolecular Science and Engineering	B	•	•	
Business, Hospitality and Tourism Management	B,W	•	•		Material Culture & Public Humanities	B	•		
Business, Management	B		•		Material Science and Engineering	B	•	•	
Business, Marketing	B	•	•		Mathematics	B	•	•	
Chemical Engineering	B	•	•		Mechanical Engineering	B,W	•	•	
Chemistry	B	•	•		Mining Engineering	B	•	•	
Civil Engineering	B	•	•		Natural Resources	W	•		
Communication	B	•			Nuclear Engineering	B,W	•	•	
Computational Tissue Engineering	B		•		Ocean Engineering	B	•		
Computer Engineering	B	•	•		Philosophy	B	•		
Computer Science & Applications	B,W	•	•		Physics	B	•	•	
Creative Technologies	B	•			Planning, Governance, and Globalization	B,W		•	
Creative Writing	B	•			Plant Pathology, Physiology, and Weed Science	B	•	•	
Crop and Soil Environmental Sciences	B	•	•		Political Science	B,O	•		
Dairy Science	B	•	•		Psychology	B	•	•	•
Data Analysis and Applied Statistics	B	•			Public Administration and Public Affairs	B,W	•	•	
Disaster Resilience	B		•		Public Health	B	•		
Economics, Sciences	B		•		Regenerative Medicine	B		•	
Education, Career and Technical Education	B	•	•		Remote Sensing	B		•	
Education, Counselor Education	B,W	•	•		Rhetoric and Writing	B		•	
Education, Curriculum and Instruction	B	•	•		Science and Technology Studies	B,W	•	•	
Education, Education Leadership and Policy Studies	B,W	•	•		Sociology	B	•	•	
Education, Education Research, Evaluation	B		•		Statistics	B	•	•	
Education, Higher Education	B	•	•		Sustainable Nanotechnologies	B		•	
Electrical Engineering	B,W	•	•		Theatre Arts	B	•		
Engineering Education	B		•		Translational Biology, Medicine, and Health	B	•	•	
Engineering Mechanics	B	•	•		Translational Obesity Research	B		•	
English	B	•			Translational Plant Science	B		•	
Entomology	B	•	•		Urban and Regional Planning	B,W	•		
Environmental Design and Planning	B		•		Water INTERface: Interdisciplinary Research Transcending Boundaries of Engineering, Science, and Human Health	B,W		•	
Environmental Engineering	B,W	•							

graduateschool.vt.edu/academics/programs

COMBINED DEGREES:

■ In addition to the regular M.S. and Ph.D.'s in biomedical engineering, two combination or collaborative degree programs, the M.D./Ph.D. and the D.V.M./Ph.D., are also available.
 ■ Psychology students earn an M.S. en route to the Ph.D., but the department does not offer a terminal M.S.

LOCATIONS:

B — Blacksburg
 W — Washington, D.C. area

ACCELERATED UNDERGRADUATE/ GRADUATE PROGRAM

Students accepted into one of the Undergraduate/ Graduate Programs may double-count up to 12 credit hours of graduate-level course work in the last two semesters of their undergraduate degree. These courses are listed on both the undergraduate and graduate transcripts. That means not only a reduction in hours spent toward a goal, but also a drop in the amount of money invested. To learn more about these and other programs, visit graduateschool.vt.edu/academics.

- Aerospace Engineering
- Agriculture and Applied Economics
- Agriculture and Life Sciences
- Animal and Poultry Sciences
- Biochemistry
- Biological Sciences
- Biological Systems Engineering
- Biomedical Engineering
- Building Construction
- Business Administration, Business Analytics
- Business Administration, Hospitality and Tourism Management
- Business Administration, Marketing
- Career and Technical Development
- Civil Engineering
- Computer Science and Mechanics
- Foreign Language and Literature
- Forest Products
- Geography
- Horticulture
- Human Nutrition, Foods and Exercise
- Industrial and Systems Engineering
- Landscape Architecture
- Material Culture and Public Humanities
- Materials Science and Engineering
- Mathematics
- Mechanical and/or Nuclear Engineering
- Mining Engineering
- Philosophy
- Physics
- Plant Pathology, Physiology and Weed Science
- Political Science
- Public and International Affairs
- Sociology
- Urban Affairs and Planning



FUNDING

Many students receive funding for graduate studies. We do our best to help students find a way to afford their graduate education.

ASSISTANTSHIPS

Administrative, research, or teaching assistantships in your department.

FELLOWSHIPS AND SCHOLARSHIPS

Sponsored by departments, other institutions, federal agencies, and private business.

FUNDING SPONSORED BY THE GRADUATE SCHOOL

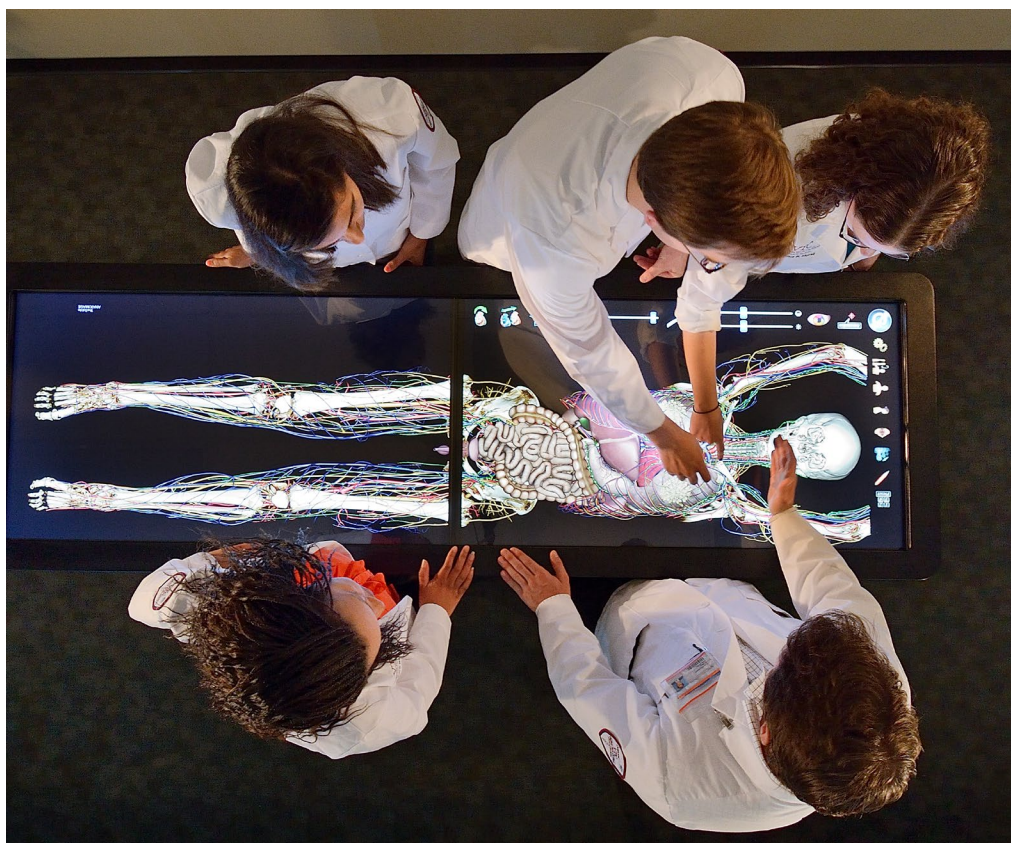
A variety of assistantships, scholarships, and fellowships sponsored by the Graduate School.

graduateschool.vt.edu/funding

OPTIONAL PRACTICAL TRAINING

OPT is a temporary employment authorization that extends your F-1 status for purposes of gaining practical experience in your major field of study. Students may receive 12 months of practical training for each higher academic level (bachelor's, master's, and doctorate).

Our advisors will work with you to prepare an OPT application and make sure you understand all the reporting requirements.



IMMIGRATION

Virginia Tech is authorized by the Department of Homeland Security to issue visa eligibility forms (I-20 and DS-2019) for admitted students who will need F-1 or J-1 visas. For all questions, contact:

Undergraduate students

Cranwell International Center

international.vt.edu/immigration/students.html

Graduate students

International Graduate Student Services

graduateschool.vt.edu/student-life/immigration-services.html

Language and Culture Institute and AdvantageVT students

lci.vt.edu/visa-information

Language and Culture Institute

AdvantageVT Pathway Program

Intensive English – Conditional Admission

840 University City Blvd.,

Blacksburg, VA 24061

Phone: 1- 540-231-9814 | Fax: 1-540-231-2986

lci-info@vt.edu | lci.vt.edu

 VTLCI

 @VT_LCI

 VTLCI

Undergraduate Admissions

925 Prices Fork Road, Blacksburg, VA 24061

Phone: 1-540-231-6267 | Fax: 1-540-231-3242

admissions@vt.edu | vt.edu/admissions

 VTadmissions

 @FollowMeToVT

 VTadmissions

#HokieVisit

Graduate Admissions

115 Otey St., Graduate School,

Blacksburg, VA 24061

Phone: 1-540-231-6529

grads@vt.edu

graduateschool.vt.edu/admissions.html

 VTGraduateSchool

 @VTGradCommunity

The International Admissions Guide is produced and distributed by the Virginia Tech Language and Culture Institute. All information correct at time of publication, August 2019. Subject to change. © 2019 Virginia Polytechnic Institute and State University.

Virginia Tech does not discriminate against employees, students, or applicants on the basis of age, color, disability, gender, gender identity, gender expression, national origin, political affiliation, race, religion, sexual orientation, genetic information, or veteran status; or otherwise discriminate against employees or applicants who inquire about, discuss, or disclose their compensation or the compensation of other employees, or applicants; or any other basis protected by law.